

## ► Features

- Flexible system for system integration & connectivity
- Compatible with any CASY chassis
- Solderless connections
- 1.5 mm steel construction
- Structured and scratch resistant black powder coating
- Assembly screws included



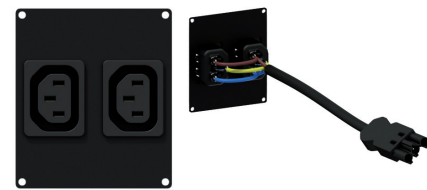
## ► Modules overview



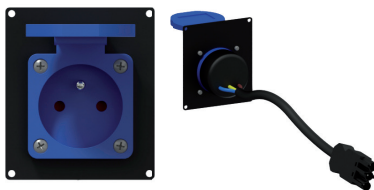
**CASY181/B**  
*Euro power male to GST18*



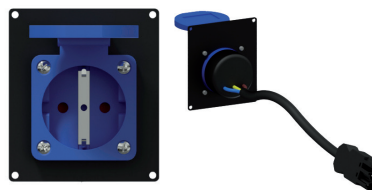
**CASY182/B**  
*Euro power female to GST18*



**CASY282/B**  
*2 x Euro power female to GST18*



**CASY285F/B**  
*French socket (IP44) to GST18*



**CASY285G/B**  
*German socket (IP44) to GST18*

## ► Specifications

ARTICLE	CONNECTION / CUTOUT	MODULE SPACE	CONNECTION TYPE	DIMENSIONS	WEIGHT
CASY181/B	Euro power male	1 Space	IEC C14 to GST18 female	35,5 x 82,1 mm	0.067 Kg
CASY182/B	Euro power female	1 Space	IEC C13 to GST18 male	35,5 x 82,1 mm	0.066 Kg
CASY282/B	2 x Euro power female	2 Space	2 x IEC C13 to GST18 male	71,5 x 82,1 mm	0.107 Kg
CASY285F/B	French socket (IP44)	2 Space	Female type E to GST18 male	71,5 x 82,1 mm	0.126 Kg
CASY285G/B	German socket (IP44)	2 Space	Female type F (CEE 7/4) to GST18 male	71,5 x 82,1 mm	0.124 Kg