

## ► Features

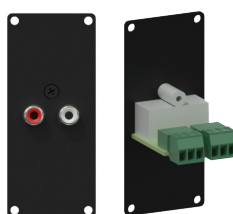
- Flexible system for system integration & connectivity
- Compatible with any CASY chassis
- Solderless connections
- 1.5 mm steel construction
- Structured and scratch resistant black powder coating
- Assembly screws included



## ► Modules overview



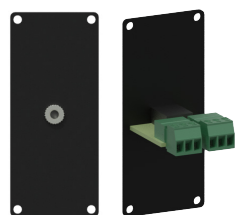
**CASY131/B**  
2 x RCA gender



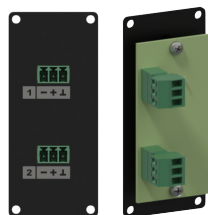
**CASY132/B**  
2 x RCA to terminal block



**CASY135/B**  
3.5 mm Jack pigtail



**CASY136/B**  
3.5 mm Jack to terminal block



**CASY138/B**  
2 x Terminal block to terminal block

## ► Specifications

ARTICLE	CONNECTION / CUTOUT	MODULE SPACE	CONNECTION TYPE	DIMENSIONS	WEIGHT
CASY131/B	2 x RCA	1 Space	2 x RCA female to 2 x RCA female (gender)	35,5 x 82,1 mm	Kg
CASY132/B	2 x RCA	1 Space	2 x RCA female to 3-pin terminal block	35,5 x 82,1 mm	Kg
CASY135/B	3.5 mm stereo jack	1 Space	3.5 mm jack female to 3.5 mm jack female pigtail	35,5 x 82,1 mm	Kg
CASY136/B	3.5 mm stereo jack	1 Space	3.5 mm jack female to 3-pin terminal block	35,5 x 82,1 mm	Kg
CASY138/B	2 x 3-pin terminal block	1 Space	Terminal block to terminal block (3-pin - 3.81 mm pitch)	35,5 x 82,1 mm	Kg